


The selection and domestication of wild berries

A close-up photograph of a cluster of pink flowers with green leaves. The flowers are in various stages of bloom, with some fully open and others as buds. The background is dark and out of focus.






Current status - arctic bramble

Harri Kokko

NWFP, Espoo, Finland, 12-13.11.2013



Circumpolar distribution

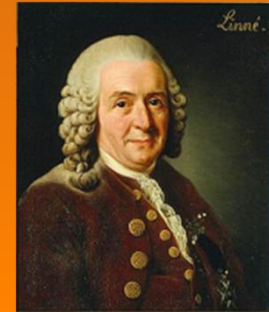
-  *Rubus arcticus* s. lat. subsp. *arcticus* Eurasian continent
-  subsp. *acaulis* North American continent
-  South of this line hybrids with *R. pubescens* are abundant
-  subsp. *stellatus* North American continent
-  subsp. *fragarioides*



Short history of domestication

- **Carl von Linneaus**
- transferred first plats from nature to the Botanical garden of Upsala 1762

”Bären av denna växt, äro ofelbart de smakligaste av all frukt, som växer självmant, icke endast i Sverige, utan i hela Europa”



- **Experinments and hybrid breeding**

Sweden: Larson G.

- *R. arcticus* x *R. stellatus*

Finland: 1) Rynänen A. 2) Hiirsalmi H. 3) Dalman P.

- *R. arcticus* x *R. ideaus*

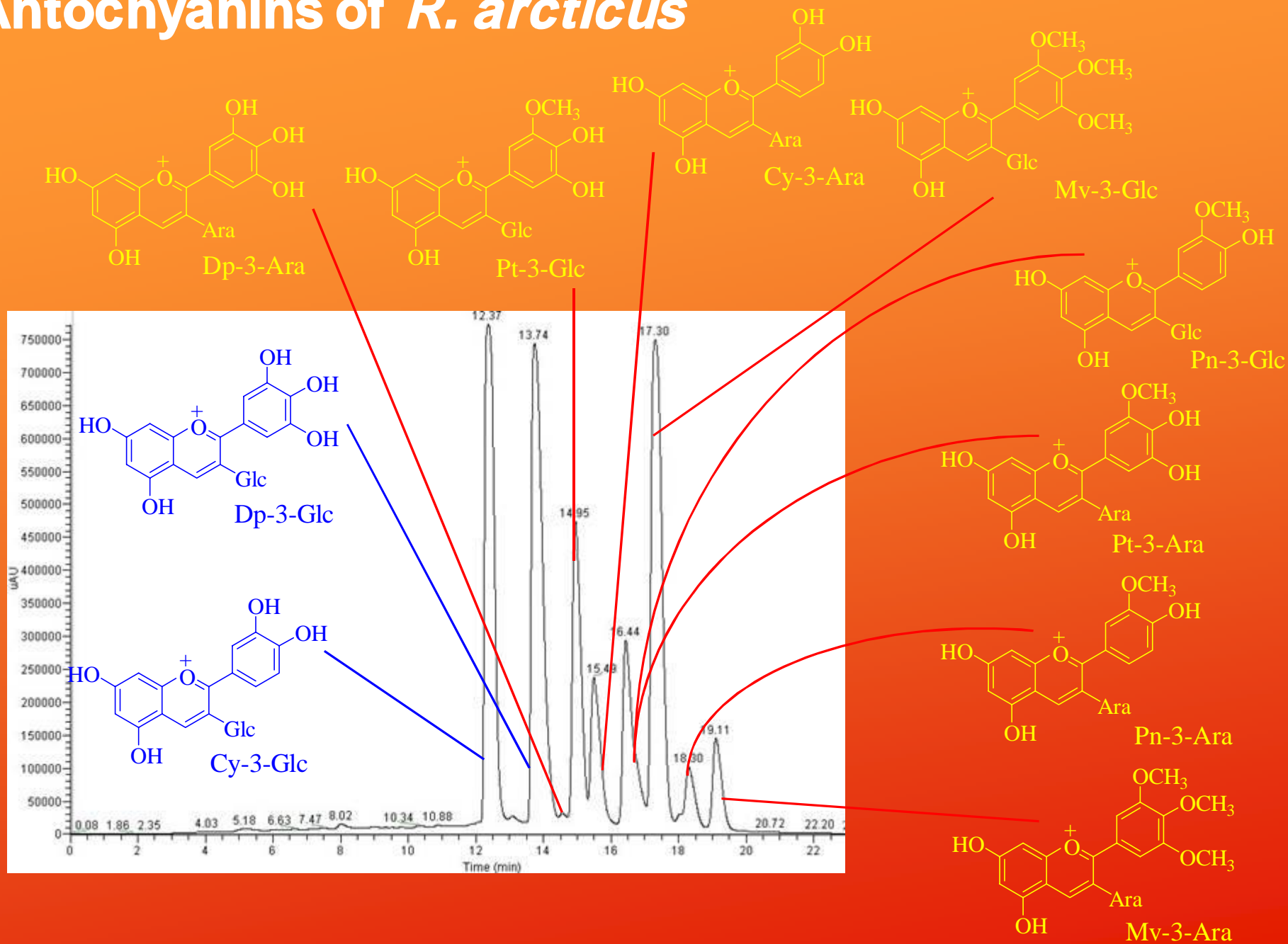
Russia: 1) Cernova, 2) Evdokimenko, S.N

- Bryansk raspberry breeding:

hybridization of *R. idaeus*, *R. occidentalis*, *R.odoratus*, *R. crataegifolius*, *R. spectabilis*, *R. arcticus*



Anthocyanins of *R. arcticus*



Cultivars

'Mespi' and 'Mesma' - Ryyänen; 1972

'Pima' = 'Mespi' x 'Mesma' - Ryyänen and Dalman; 1983:

'Elpee', 'Muuruska', 'Marika' - Pirinen, Dalman, Kärenlampi, Tammisola, Kokko; 1998

'Susanna' - no publication

'Alli' - Kostamo, Toljamo, Antonius, Kokko, Kärenlampi; 2013

SSR-markers were developed for cultivar identification

(A) Cultivar SSR alleles (bp)		<i>n</i>	(B) Diverging alleles from cultivar collections		
'Alli'	126, 175	13	126, 177		
'Elpee'	135, 157	5			
'Marika'	159, 163	4	123, 175	150, 175	175, 175
'Mesma'	146, 148	7			
'Mespi'	126, 173	6	146, 173		
'Muuruska'	135, 165	6			
'Pima'	126, 135	9	123, 126	131, 175	
'Susanna'	175, 175	1			

2013:11 (4)

ANNALS OF
BOTANY
Founded 1887

**Morphological and molecular identification to secure cultivar maintenance
and management of self-sterile *Rubus arcticus***

K. Kostamo^{1,2,*}, A. Toljamo¹, K. Antonius³, H. Kokko¹ and S. O. Kärenlampi¹

Dryberry disease

Caused by *Perenospora sparsa*

- Redish irregular leaf spots
 - Symptoms varied among cultivars
- Berry malform
 - > loss of crop - even total



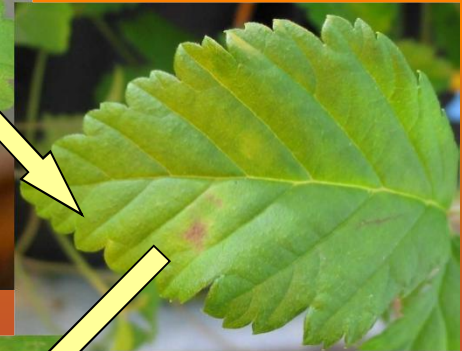
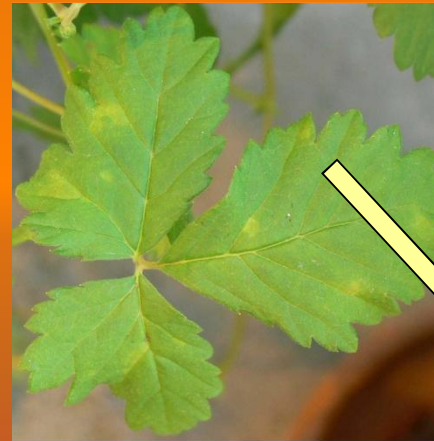
qPCR of downy mildew



cv. Pima



cv. Alli



Hukkanen A, Pietikäinen L, Kärenlampi S, Kokko H. Quantification of downy mildew (*Peronospora sparsa*) in *Rubus* species using real-time PCR
EUROPEAN JOURNAL OF PLANT PATHOLOGY 2006,116: 225-235.

Detection and control of downy mildew

European Journal of Plant Pathology

November 2006, Volume 116, Issue 3, pp 225-235

Quantification of downy mildew (*Peronospora sparsa*) in *Rubus* species using real-time PCR

Anne Hukkanen, Liisa Pietikäinen, Sirpa Kärenlampi, Harri Kokko

2008, 56, 1008–1016

JOURNAL OF
AGRICULTURAL AND
FOOD CHEMISTRY

Impact of Agrochemicals on *Peronospora sparsa* and Phenolic Profiles in Three *Rubus arcticus* Cultivars

ANNE HUKKANEN,^{*,†} KATRI KOSTAMO,^{†,§} SIRPA KÄRENLAMPI,[†] AND HARRI KOKKO[†]

MOLECULAR PLANT PATHOLOGY (2008) 9(6), 799–808

DOI: 10.1111/J.1364-3703.2008.00502.X

Benzothiadiazole affects the leaf proteome in arctic bramble (*Rubus arcticus*)

ANNE HUKKANEN^{1,*}, HARRI KOKKO¹, ANTONY BUCHALA², JUKKA HÄYRINEN¹ AND SIRPA KÄRENLAMPI¹

Breeding and selection of downy mildew resistant cultivars



Clone selection under open-field

"Hanging plants" with raincover







Promising clones between 2009-12

- resistant against downy mildew
- good crop, big berry size, uni colour
- Good flavor and aroma

clone154 (Mespi x Alli)



clone164 (Reiska x Alli)





Bumblebee Pollination

beeline



PULITARIALINE HELLE OY
Batchcode: 28/0121
Placement: 08-01-2010
Week in: 01 Belicht

Syngenta Bumble Bees
P.O. Box 10272, 6600 GZ Wageningen, The Netherlands
T +31 (0) 485 457 200
F +31 (0) 485 457 210
E info@syngentabumblebees.nl
W www.syngentabumblebees.nl

Syngenta Bumble
Little Chalfont, Bucks HP84 9QA, UK
T +44 (0) 1295 863 200
F +44 (0) 1295 863 205
E info@syngentabumble.co.uk
W www.syngentabumble.co.uk

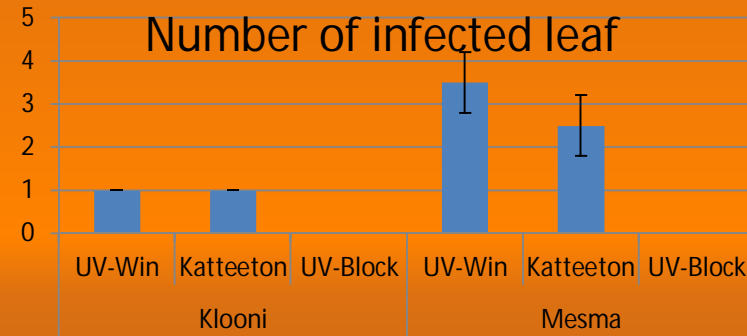
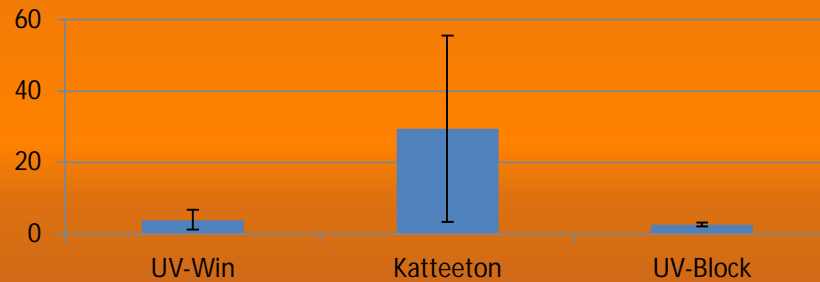
syngenta

Fotoselective plastic cover different UV transparency

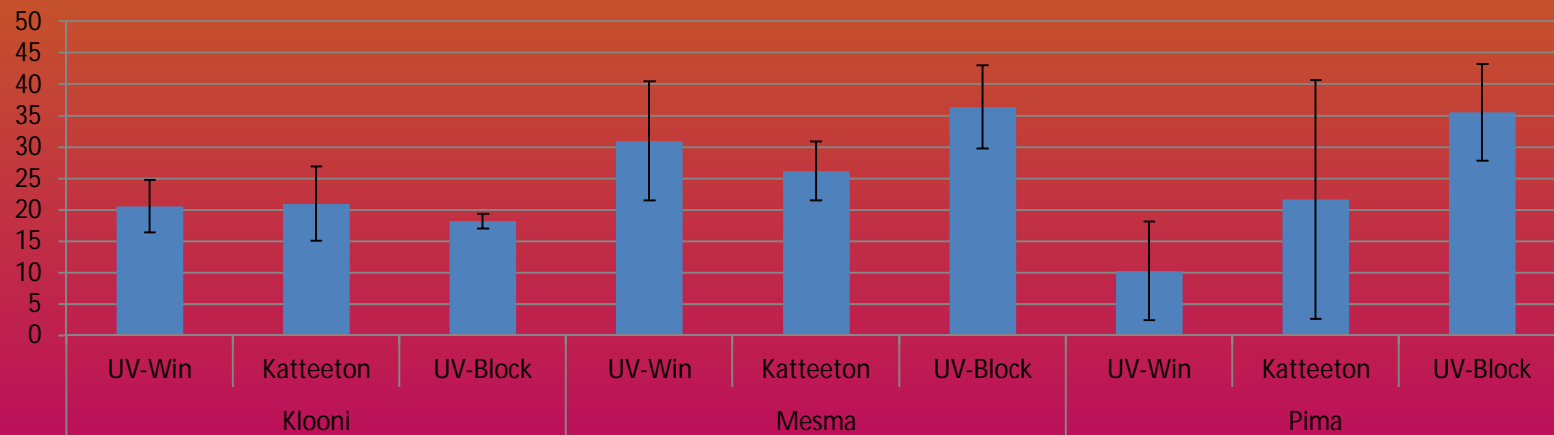


Effect of plastic covers

Number of infected leaf cv. Pima



Crop (berries g/plant)



Initiation greenhouse and tunnel experiments 2012



Plant towers 2013-2015

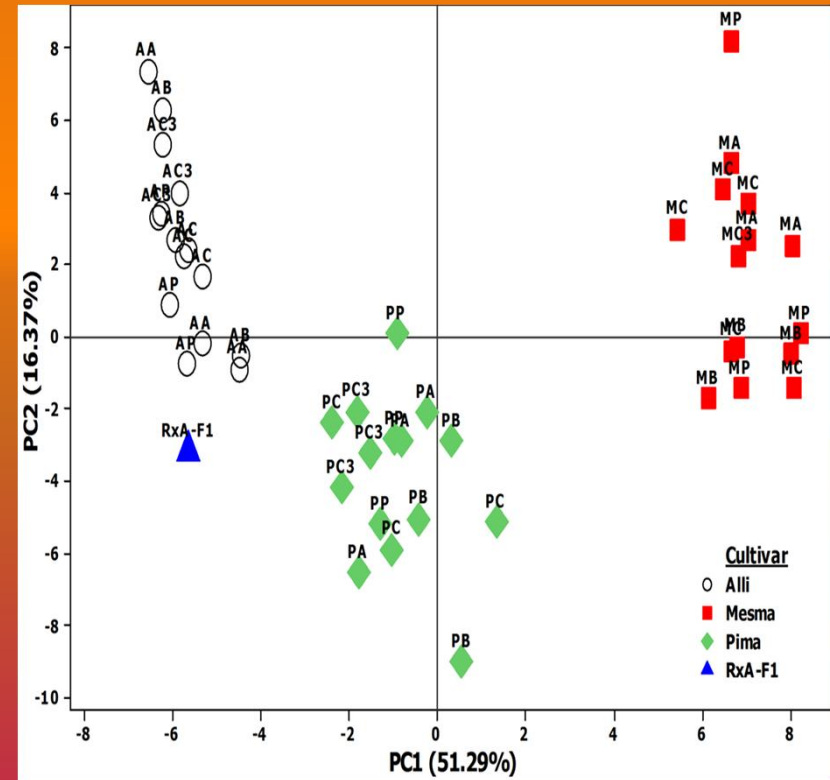
New cultivation technique

- 5 to 10 more plants per m²
- Irrigation experiments
- Fertilization experiments
- Nutrient recirculation
- Light intensity and wavelength vs. flowering intensity
- Easy and more rapid hand picking of berries



Arctic bramble volatile profiling

- 79 aroma metabolites
- 16 aliphatic esters
- 16 aromatic structures
- 12 terpenes
- 10 alcohols
- 5 ketones
- 4 carotenoid degrad. products
- 3 furanes
- 2 aldehydes
- 10 unknown structures



Main aroma **mesifurane** = (2,5-dimethyl-4-methoxy-2,3-dihydro-3-furanone)
Was detected at high levels in all berries

Ongoing work and future aims

- **New superior cultivars:**
 - Resistant cultivars against *P. sparsa*
 - High yield
 - Favourable colour
 - Big berries
 - Unique aroma and volatiles
- **New cultivation technology:**
 - Plant towers
 - Nutrient optimisation
- **NGS and genome sequencing**
 - cv. Mespi
 - Dual transcriptome of *P. sparsa* and *R. arcticus* during infection



Aitoja makuja

Rubus arcticus L.
Arctic bramble.

Mesimarja



Savon oma jalokivi.

Mesimarja on ainutlaatuinen marja. Rajoitettu saatavuus ja vertaistaan turhaan etsivä äärimmäisen hienostunut aromi tekevät siitä halutun, mutta vaikeasti hankittavan herkun. Ei ole sattumaa, että asiantuntijat ja laatutietoiset nautiskelijat ovat jo vuosikymmeniä ylistäneet mesimarjaa Euroopan hienomakuisimmaksi marjaksi.



Thanks



Euroopan maaseudun
kehittämisen maatalousrahasto:
Eurooppa investoi maaseutualueisiin